



## SSD2925

### 29.3" Resizing LCD, 1000 nits LED backlight, 1366x512 ultra wide aspect ratio 16:6

SSD2925 is an innovative ultra-wide, sunlight readable, LED backlight LCD display. It provides LCD panel with specific ratios for digital signage, public transportation, exhibition hall, department store, vending machine and industrial applications. Incorporating with A.D. control board and backlight design, it is high brightness and sunlight readable panel, can display high-quality video with energy-efficient.

#### Key Features

- Resizing LCD
- Ultra Wide Screen (16 : 6)
- Sunlight Readable
- LED Backlight
- High Brightness 1000 nits
- Low Power Consumption
- High Uniformity (90%)
- Wide Dimming
- Life Expectancy (70,000hrs)
- Slim Bezel



### Specifications

V2

<b>Model No.</b>	<b>SSD2925</b>
<b>Description</b>	29.3" Resizing LCD, 1000 nits LED backlight, 1366x512
<b>Display Area</b>	697.68 x 261.5 mm
<b>Brightness</b>	1,000 cd/m <sup>2</sup>
<b>Resolution</b>	1366 x 512
<b>Aspect Ratio</b>	16 : 6
<b>Contrast Ratio</b>	2500:1
<b>Pixel Pitch (mm)</b>	0.51075 x 0.51075
<b>Viewing Angle</b>	176°(H), 176°(V)
<b>Display Colors</b>	16.7M
<b>Response Time (Typical)</b>	6.5 ms
<b>Sync</b>	LVDS
<b>Power Consumption</b>	70W
<b>Dimensions (mm)</b>	740.2 x 298 x 60.9
<b>Weight (Net)</b>	7 Kg
<b>LED Driving Board</b>	<b>LID29A02</b>
<b>Control Board (Optional)</b>	<b>AD2662GD / AD2662GDVAR</b>
<input type="checkbox"/> AD2662GD	VGA + DVI
<input type="checkbox"/> AD2662GDVAR	VGA + DVI (Optional AV/ S-Video / Component / Audio)
<input type="checkbox"/> Others	
<b>F / R Control Button</b>	5 Key / 4 Key
<input type="checkbox"/> 4 Key	Power Switch, Menu, Select (+,-),
<input type="checkbox"/> 5 Key	Power Switch, Menu, Select (+,-),Auto
<b>OSD Menu</b>	Brightness, Contrast, H/V Position, Color, Phase, Clock...
<b>Optional</b>	<input type="checkbox"/> Touch Screen

Specifications are subject to change without notice.

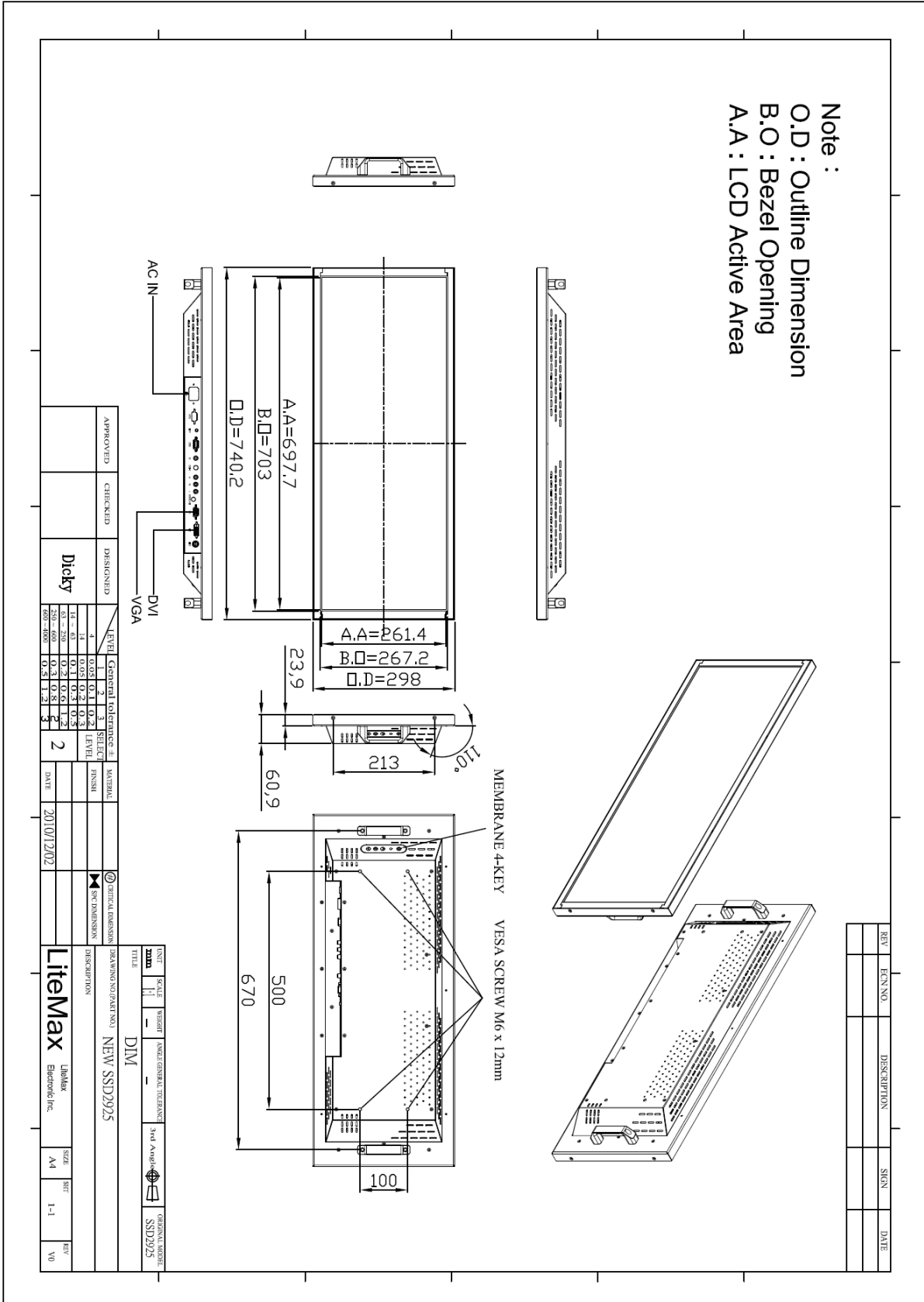
All brands or product names are trademarks or registered trademarks of their respective companies.

**SSD** = Panel + LED Driving Board + Control Board



## Mechanical Drawing

### Outline Dimensions





### Ordering Information

Model Name	Description
SSD2925-ENB-G03	29.3",1000nits,1366*512.LID29,AD2662GD,O/B.AC100~240V input,PF,2-in-1 carton,V1
SSD2925-ENB-G04	29.3",1000nits,1366*512.LID29,AD2662GDVAR,O/B,5w-speaker,AC100~240V input,PF,2-in-1 carton.V1

### Optional Accessories

Part Number	Description
<b>810618301010 (Optional)</b>	CABLE.POWER.AC.1830mm.(US Type).3PIN PLUG TO SOCKET.SVT(SPT-2 )18AWG 3C BLACK,P.
<b>810618301090 (Optional)</b>	CABLE,POWER,AC,1830mm.(EU Type) 3PIN PLUG TO.SOCKET,H05VV-F 3G.0.75MMSQ BLACK,P
<b>810618301050 (Optional)</b>	CABLE,POWER,AC,1830mm.UK(FUSE) 3PIN PLUG TO.SOCKET,H05VV-F 3C(3G) 0.75MMSQ BLACK,P
<b>810618301170 (Optional)</b>	CABLE.POWER,AC,1830mm. (AU Type) 3PIN PLUG TO 2P SOCKET.LTSA 0.75MMSQ BLACK,P
<b>810618301030 (Optional)</b>	CABLE.POWER.AC.1830mm.(JP Type).2PIN PLUG Y TERMINAL TO. SOCKET.VCTF 3C 0.75MMSQ BLACK,P