



DLF1555 / DLH1555 V2
15" TFT LCD, LED Backlight 1000nits,XGA

15" TFT LCD panel, built-in 1000 nits high bright for sunlight readable LCD display, high transmittance color filter, high transmission polarizing plates, Low Power Consumption, suitable for kiosk, advertising, POS, marine, transportation, gaming, studio display, gas pump.

Key Features

- Sunlight Readable
- LED Backlight
- High Shock & Vibration Resistance
- Low Power Consumption
- Wide Operation Temperature.
- High Uniformity (90%)
- Low EMI Noise
- Wide Dimming
- Life Expectancy (70,000hrs)



Specifications

V1

Model No.	DLF1555 V2	DLH1555 V2
Description	15" TFT LCD, LED Backlight 1000nits,XGA	
Display Area (mm)	304.128 x 228.096 mm	
Brightness	1000 cd/m ²	
Resolution	1024x768 (XGA)	
Contrast Ratio	1000 : 1	
Pixel Pitch (mm)	0.297(H) x 0.297(V)	
Viewing Angle	+80°~-80°(H), +70°~-70°(V)	
Display Colors	16.2M	
Response Time (Typical)	16ms	
Sync	LVDS	
Power Consumption	13W/16W	
Dimensions (mm)	326.5x253.5x11.6	
Weight (Net)	1.1Kg	
LED Driving Board	LID 15A11	
Control Board (Optional)	<input type="checkbox"/> AD6038G <input type="checkbox"/> AD6038GA <input type="checkbox"/> AD6038GD <input type="checkbox"/> AD2662GDHVA <input type="checkbox"/> AD2662GDVAR	
<input type="checkbox"/> AD6038G	VGA	
<input type="checkbox"/> AD6038GA	VGA+Audio	
<input type="checkbox"/> AD6038GD	VGA+DVI	
<input type="checkbox"/> AD2662GDHVA	VGA+CVBS+S-Video+Audio (Optional DVI / Component /HDMI)	
<input type="checkbox"/> AD2662GDVAR	VGA+DVI (Optional S-Video/ Component / Audio)	
F / R Control Button	<input type="checkbox"/> 5 Key <input type="checkbox"/> 4 Key	
<input type="checkbox"/> 5 Key	Power Switch, Menu, Select (+,-), Auto	
<input type="checkbox"/> 4 Key	Power Switch, Menu, Select (+,-),	
OSD Menu	Brightness, Contrast, H/V Position, Color, Phase, Clock...	
Optional	<input type="checkbox"/> AOT <input type="checkbox"/> Touch Screen	

Specifications are subject to change without notice.

All brands or product names are trademarks or registered trademarks of their respective companies.

DLF= Panel+LED Driving Board

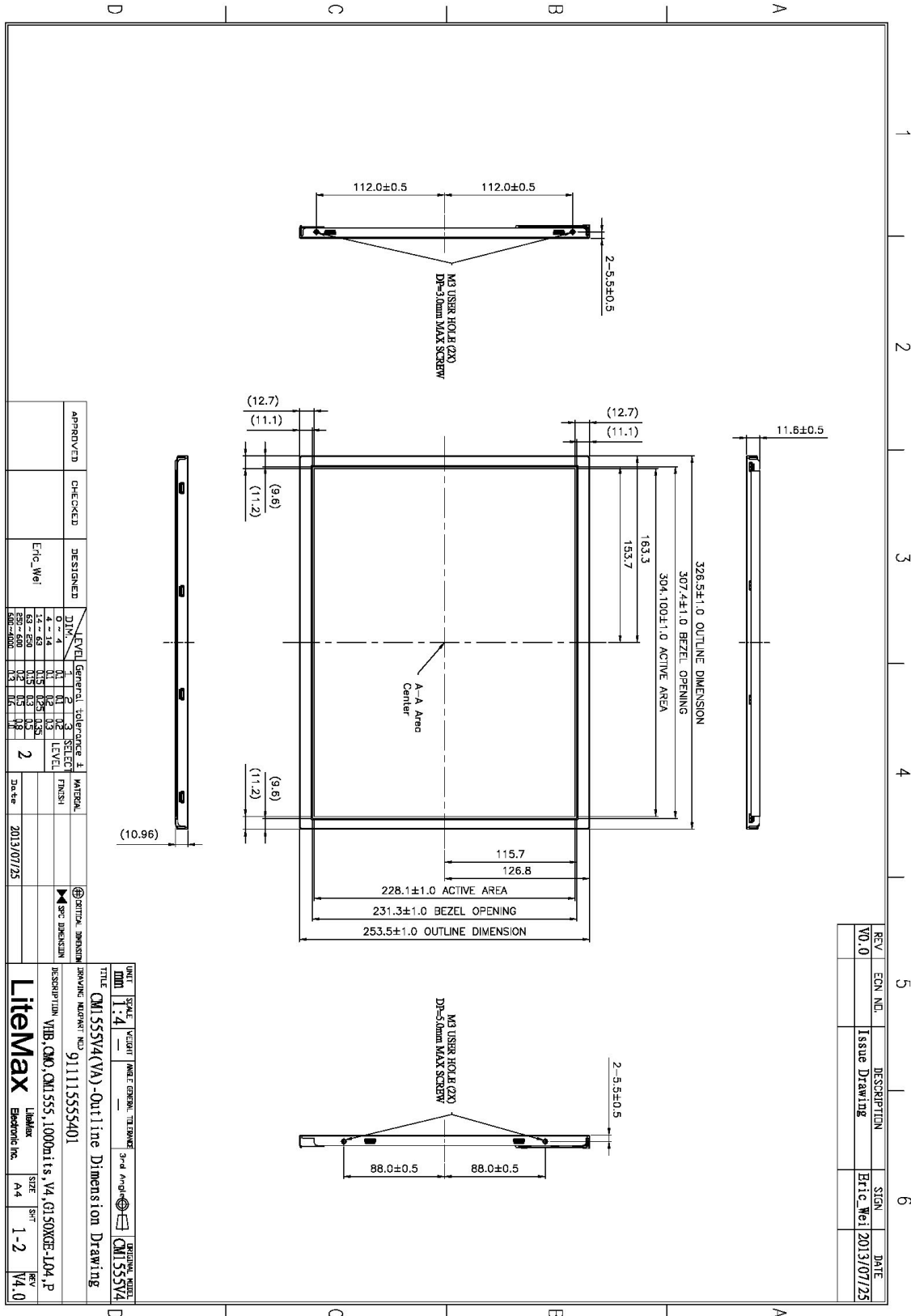
DLH= Panel+LED Driving Board+Control Board



Mechanical Drawing

Outline Dimensions

Unit:mm



APPROVED	CHECKED	DESIGNED	DATE
		Eric Wei	2013/07/25

DIM.	TOLERANCE	LEVEL	SELECT	MATERIAL
0 - 4	±0.1	1	3	FRSST
4 - 63	±0.15	1	3	FRSST
63 - 630	±0.2	1	3	FRSST
630 - 6300	±0.3	1	3	FRSST

REV	ECN NO.	DESCRIPTION	SIGN	DATE
V0.0		Issue Drawing	Eric Wei	2013/07/25

UNIT	SCALE	WEIGHT	NAME	GENERAL	TITERS
MM	1:4				

TITLE	CM155V4(VA) - Outline Dimension Drawing
BRWING NUMBER	91111555401
RESPERITION	YIB, CMO, CM155, 1000hts, V4, G150XGB-104, P
LIBRARY	Electronic Inc.
SIZE	A4
SHEET	1-2
REV	V4.0

A4 297x210mm



Ordering Information

Part Number	Description
DLF1555-ENN-A11	15",1000nits, XGA,LID15A11 ,V2
DLH1555-ENN-I11	15",1000nits, XGA,LID15A11,AD6038G,V2
DLH1555-ENN-I12	15",1000nits, XGA,LID15A11,AD6038GA,V2
DLH1555-ENN-G11	15",1000nits, XGA,LID15A11,AD2662GVA+DVI Cable,V2

Optional Accessories

Part Number	Description
840612051100	ADAPTER.12V.5A.60W.EA1050A,P
810618301010	CABLE.POWER.AC.1830mm USA type
810618301090	CABLE,POWER,AC,1830mm Europe type
810618301050	CABLE.POWER.AC.1830mm UK type
810618301170	CABLE.POWER,AC,1830mm Australia type
810618301030	CABLE.POWER.AC.1830mm Japan type